

*European Conference of Ministers responsible for Spatial/Regional Planning  
(Technical Conference on Functional Areas) - Bucharest, 30 May 2017*

# **BRAILA PERI-URBAN ZONE PLAN**

**(P.A.T.Z.P. Braila)**

**CLIENT: BRAILA COUNTY COUNCIL**  
**2011-2012**

*PROJECT TEAM:*

**C.C.P.E.C. University of Architecture and Urbanism**  
**„Ion Mincu” Bucharest**

*TOGETHER WITH:*

**S.C. HALCROW ROMANIA**  
**CICADIT – Geography Faculty, Bucharest University**  
**S.C. BLOM ROMANIA S.R.L.**

# Urban system Braila – Galati on the Danube River



*Braila – Galati is close to a triplex confinium border (Romania-R.Moldova-Ukraine)*



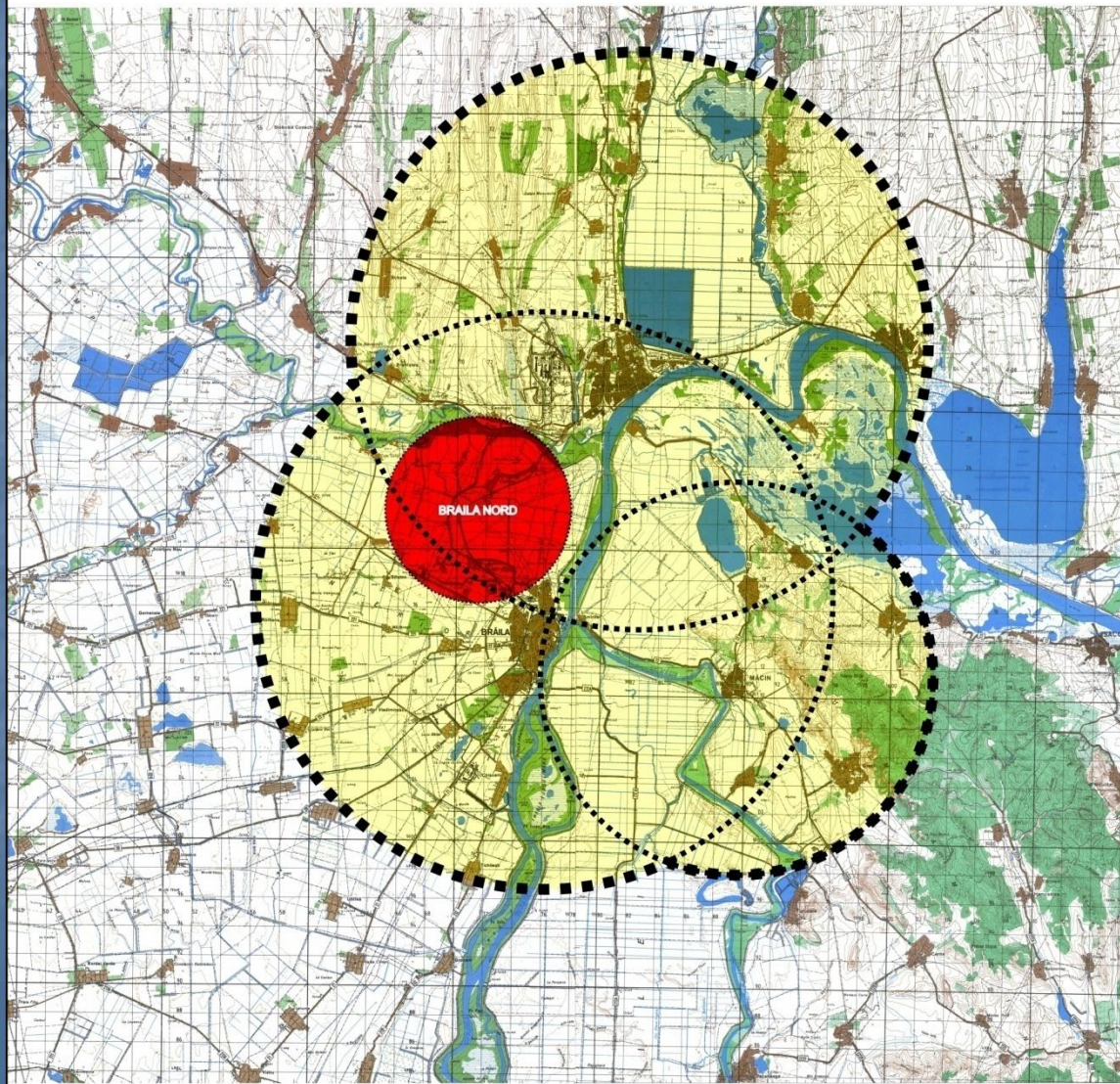


## PATZ PERIURBAN BRAILA

ETAPA 4 - STRATEGIA DE DEZVOLTARE A TERITORIULUI DE NORD AL PERIURBANULUI MUNICIPIULUI BRAILA SI REGULAMENTUL - CADRU DE URBANISM PENTRU ACEST TERITOIU

SISTEMUL URBAN BRAILA - GALATI - MACIN

RAZA DE INFLUENTA A SISTEMULUI URBAN BRAILA-GALATI



# BRAILA PERI-URBAN ZONE

according to the No.351  
Law - National Territory  
Planning (IV-th Section)

- *Braila – Galati is the only  
Urban system according to  
this law*

- ***Historical concurrence  
of the two Cities, Braila  
and Galati***, make almost  
impossible until now a  
co-ordinated spatial  
development territory

- *Population of zone  
decrease from 570 000  
(2001) to app. 520 000  
(2011)*



# The main aim of the plan P.A.T.Z.P.Braila

- Spatial planning proposal **for the development territory – between the two cities** ( on Braila county administrative territory)
- *Valorification of the territorial potential by:*
  - ❖ ***Increasing Accesibility:***
    - *For a future international airport*
    - *An future express-way Brăila Galați and further link to A2 highway*
    - *A future bridge over the Danube*

# RESTRICTIVE ELEMENTS FOR THE DEVELOPMENT

- ❑ **Environment matters**
- ❑ **Natural and built heritage, including the landscape**
- ❑ **Human settlement network**
  - The concentration of the population (55% of the total counties population lives in the peri-urban zone territory)
  - Decrease of the industrial activities
- ❑ **Geostrategic matters**

## DEVELOPMENT POTENTIAL ELEMENTS

- ❑ **Natural environment**
  - **Two maritime ports** -Danube is linked to the Black sea
- ❑ **Natural, built and landscape heritage**
- ❑ **Human settlement network**
  - The two nearby cities at about 15 km distance
  - The greatest urban agglomeration of Romania after Bucharest
- ❑ **Geostrategic position on the Est of the EU**



*Braila and Galati - monocephal counties - An urban agglomeration in a sea of rurality*

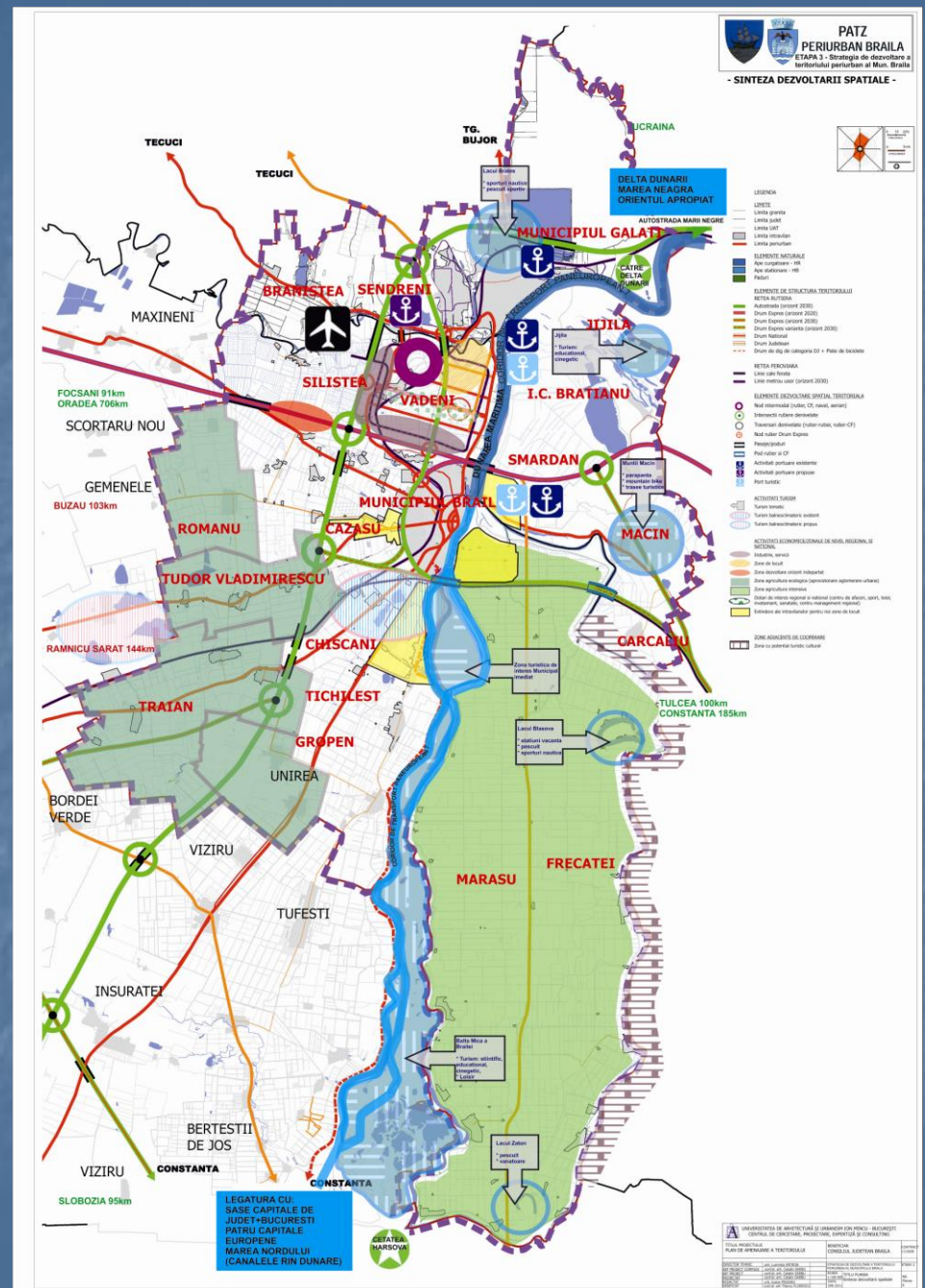
# Development vision

- *THE URBAN SYSTEM BRĂILA-GALAȚI  
WILL BE*
  - *AN UE GATE TO THE EAST*
  - *LOGISTIC PLATFORM OF A  
CONTINENTAL LEVEL*



- Human settlement network (*public networks for local, regional and national levels*)

- **Operational center**  
*(stock of the data, operations, decisions, monitoring – for whole territory)*





# Essential physical conditions of development

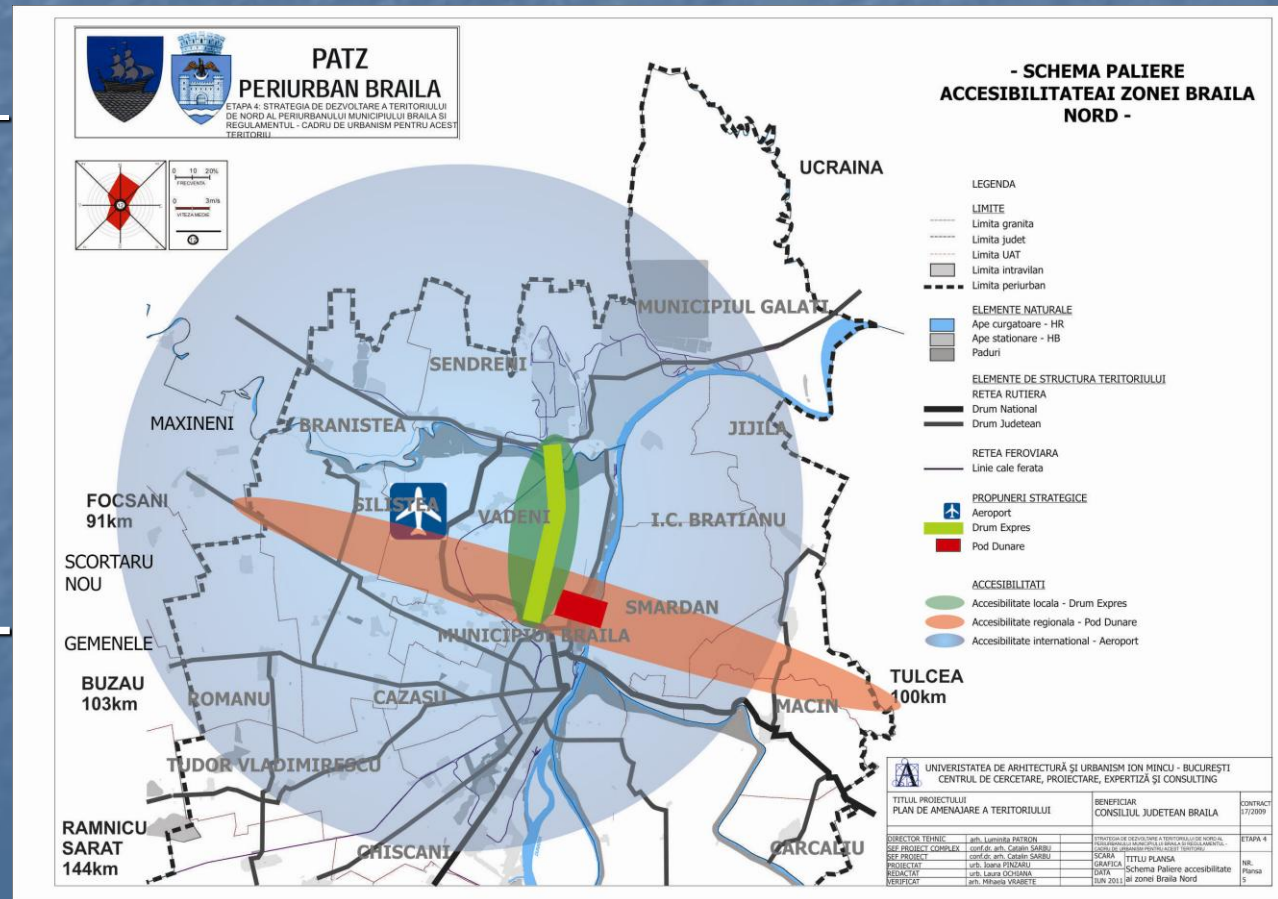
- Development of a balanced human settlements network of the two counties (Braila and Galati)
- Increasing the accessibility of the territory at local, regional, national and international levels
- Complex hydro-technical infrastructure development

# Three pillars of the future territorial development *(physical accessibility)*

**1. LOCAL-** An expressway and a light railway Braila-Galati

**2. REGIONAL -** A bridge over the Danube river

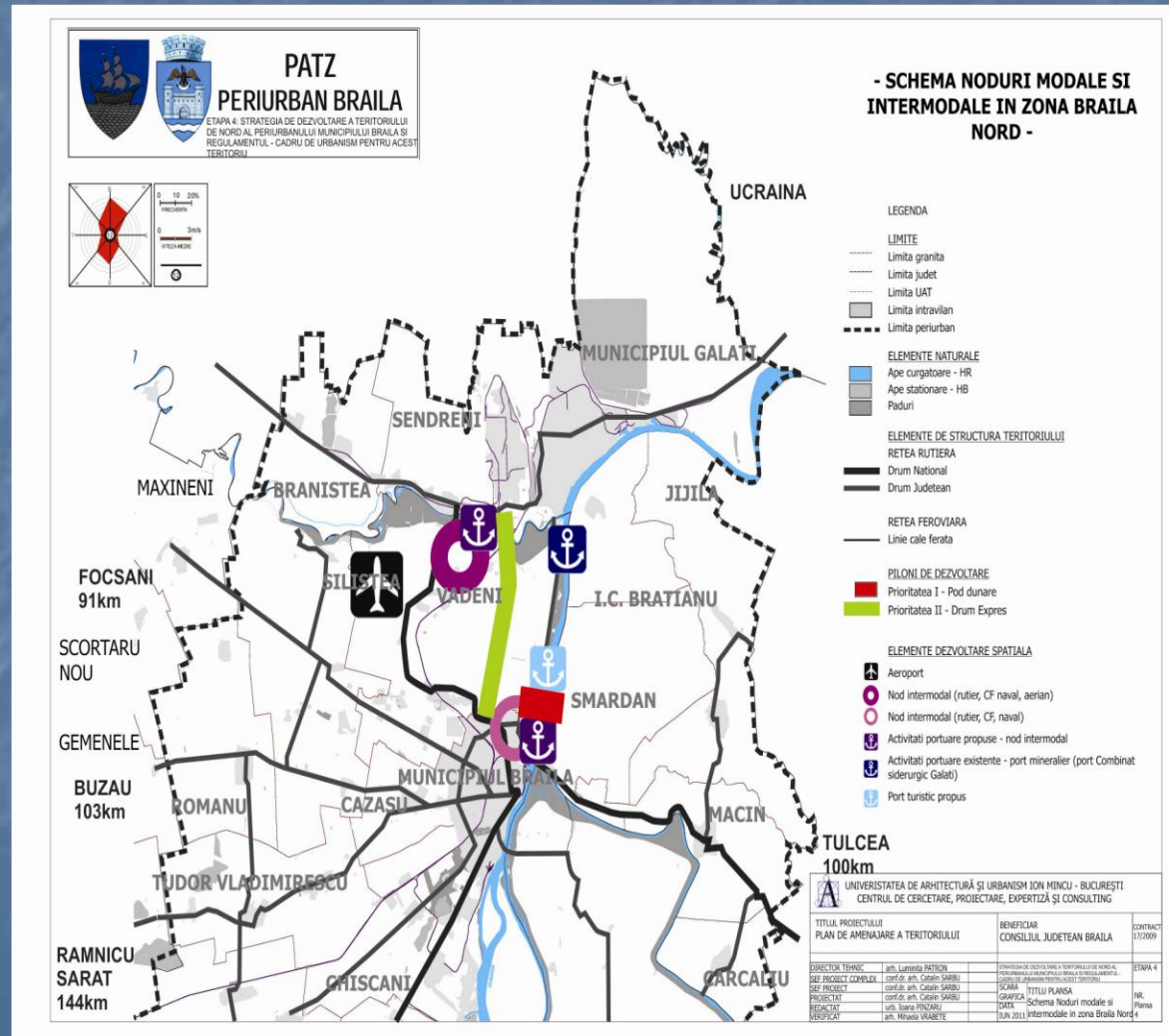
**3. INTERNATIONAL**  
- An international airport





# Hydrotechnical works

- A new system of dams against flooding
- A new commercial port in the North of Braila
- A touristic port for local and river cruises
- Preparing of Siret river for navigation



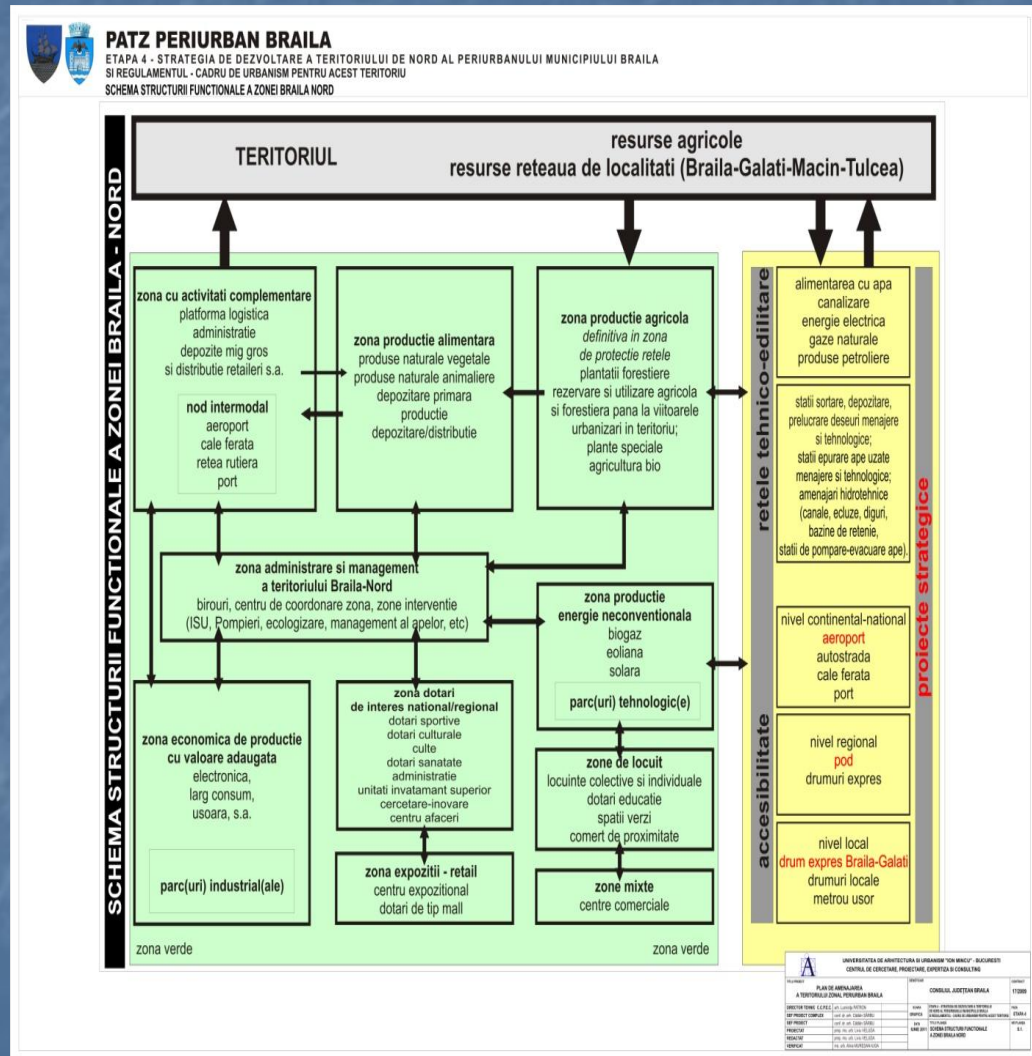
# Economic redevelopment

Zone as a a complex activity park

Transport activities based on intermodal transport

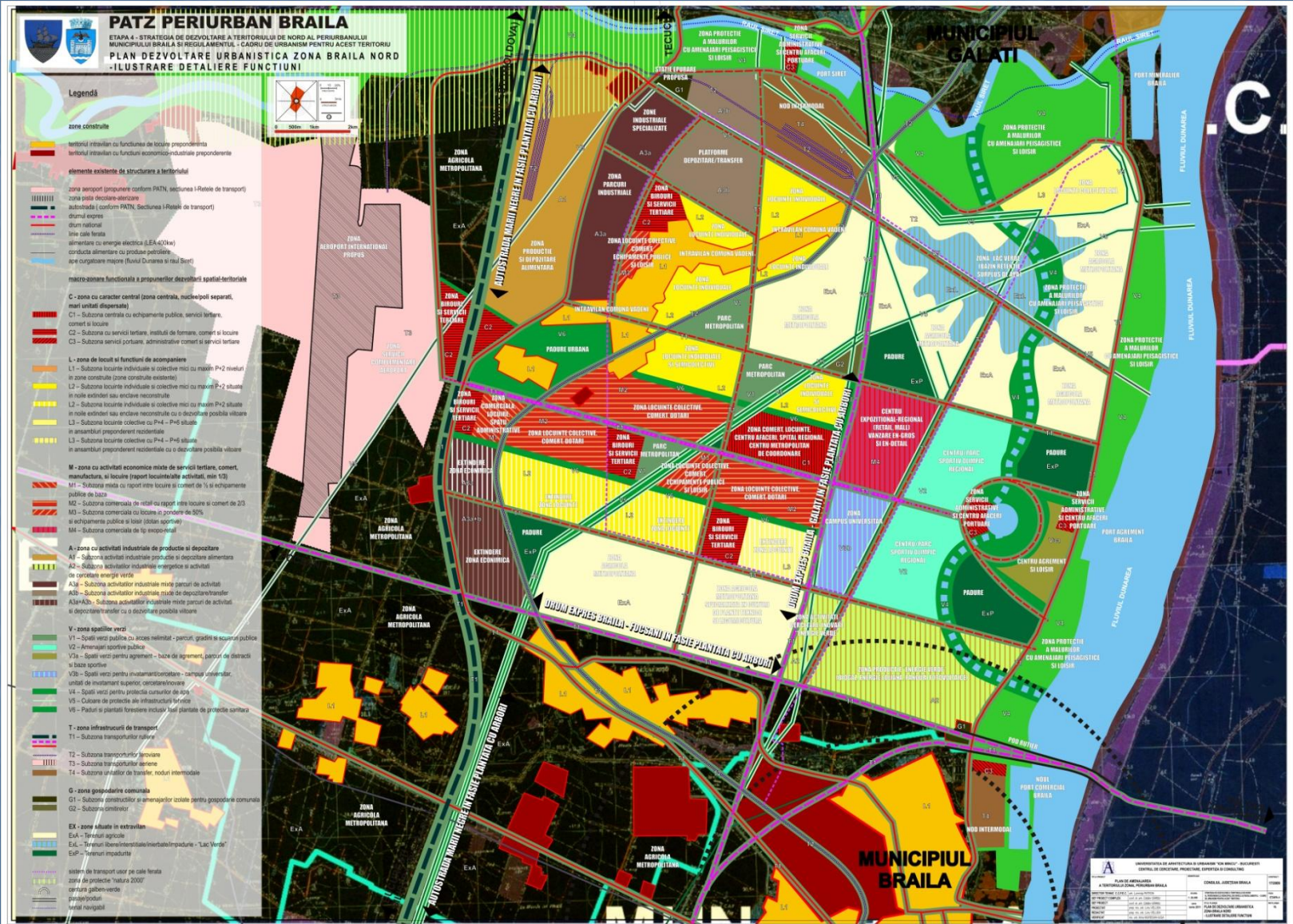
- ❖ transfer zones
- ❖ local logistic poles (storage/primary processing/regional and local distribution)

- Developing of research - innovation centers – microproduction (linked to performance industries)
- Integration of development processes of zone within Danube Strategy objectives





# Long term spatial development features of zone Braila between and Galati



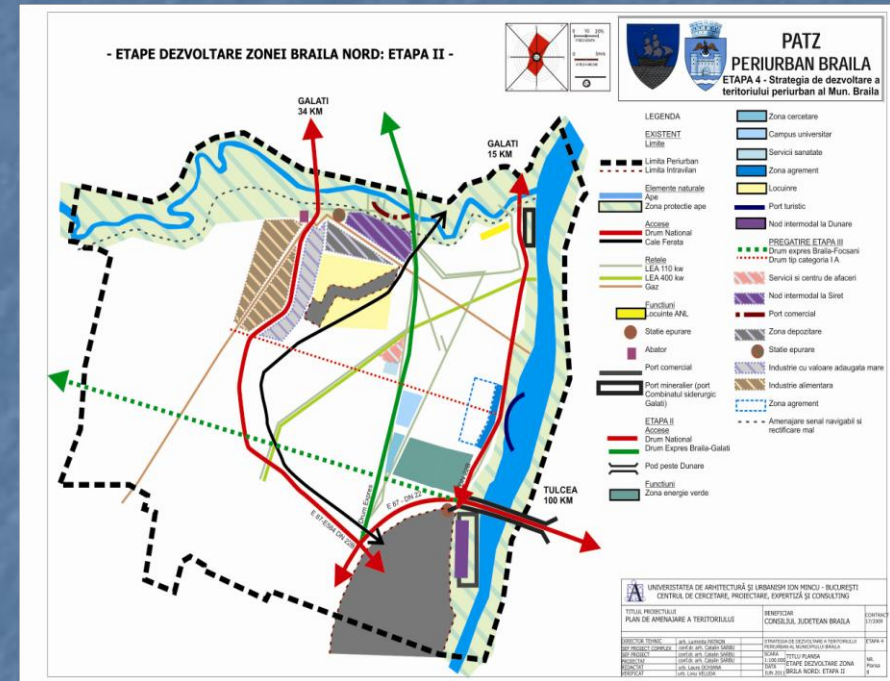
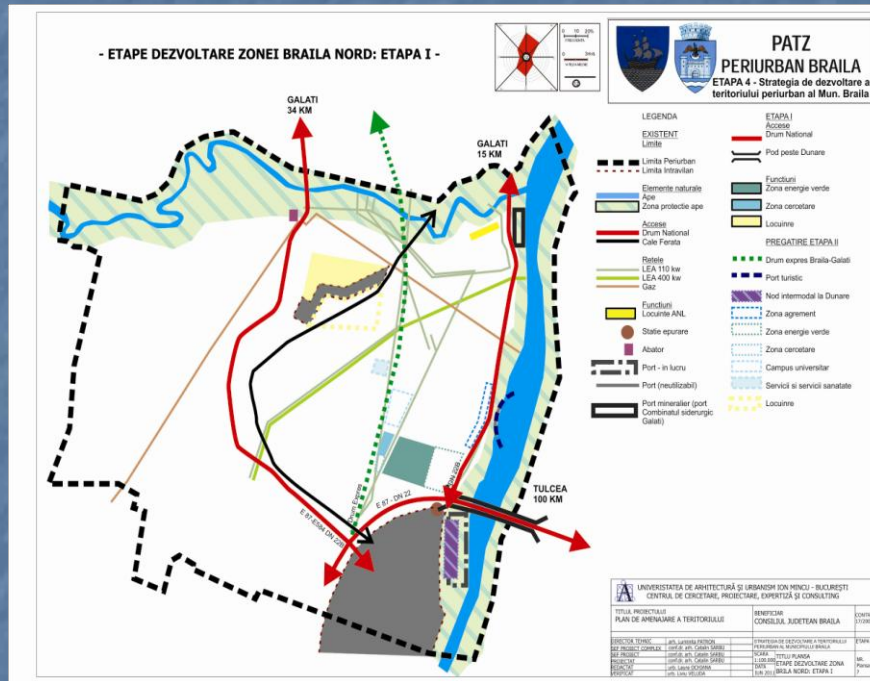


# PREREQUISITE ELEMENTS FOR AN INSTITUTIONAL DEVELOPMENT, NEED TO ACCOMPLISH OBJECTIVES

- ❑ Structuring **a complex institutional network** - vertical and horizontal levels
- ❑ Solving the problems of the **land property**
- ❑ Legislative matters
- ❑ Establish **a complex management unit** able to administrate coherently and integrate technically the development of Braila – Galati urban system



# Possible stages for spatial development



## 1. Hydrotechnical works (ports, dams)

Bridge over Danube river

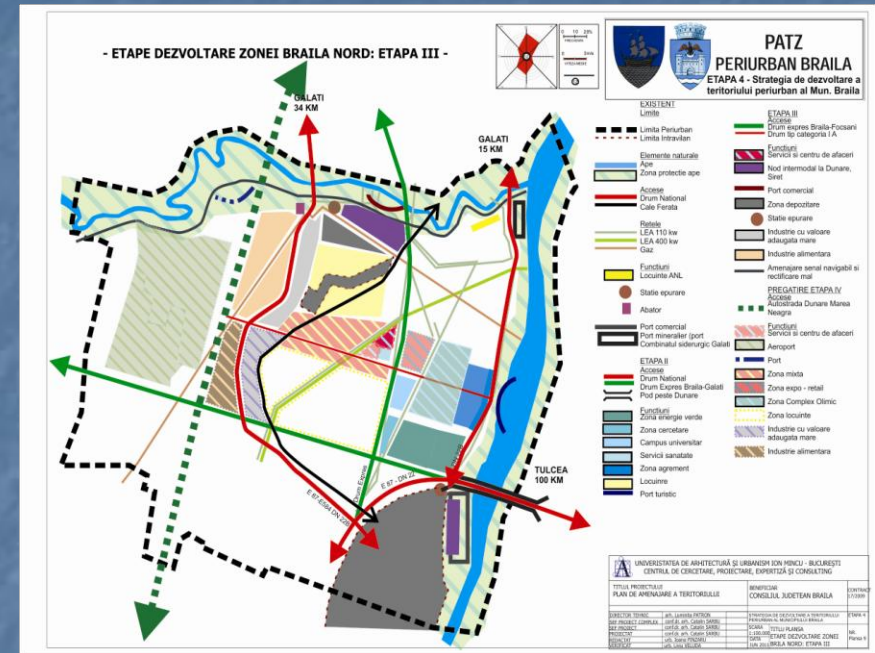
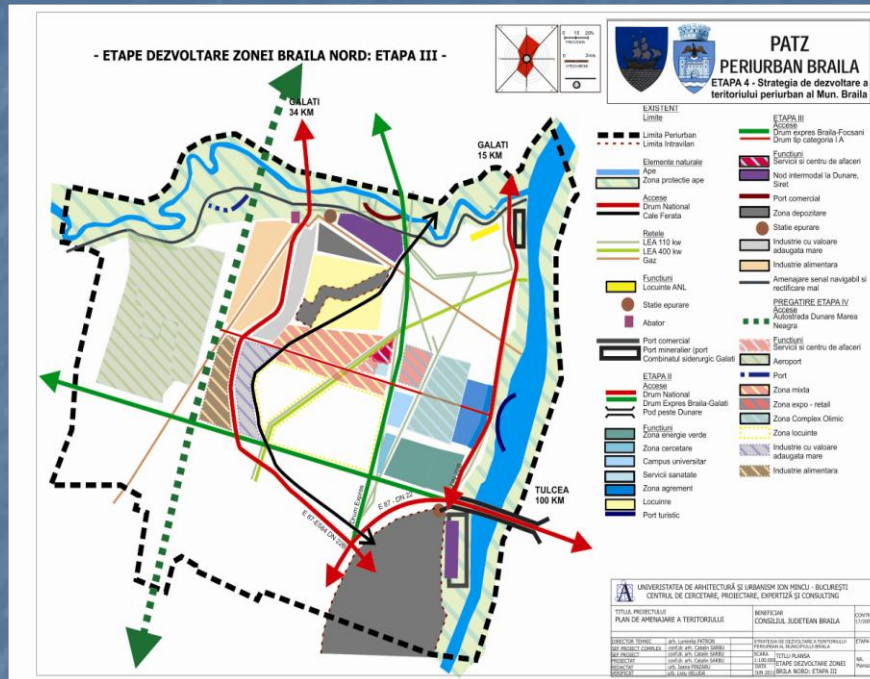
Express road Braila – Galati

## 2. Food industry

High level added value industry

Intermodal infrastructures

Renewable energy zone



**3.** Researches infrastructure  
Sports areas  
Dwellings, social  
Airport  
Extension of the industries

**4.** Dwellings  
Mixed functions areas  
Express motorways  
Loisir, social



**A question concerning specific territorial strategic development (not only for Romania):**

**which is now the right balance between**

- **concentration** of the activities and population in/around the big urban agglomerations and
- structuring an **intercommunality national system** around little urban-rural centers

*European Conference of Ministers responsible for Spatial/Regional Planning  
(Technical Conference on Functional Areas) - Bucharest, 30 May 2017*